



orenschaw designer homes

design inspiration **FILE**



odh
orenschaw designer homes

BUILT FOR LIVING

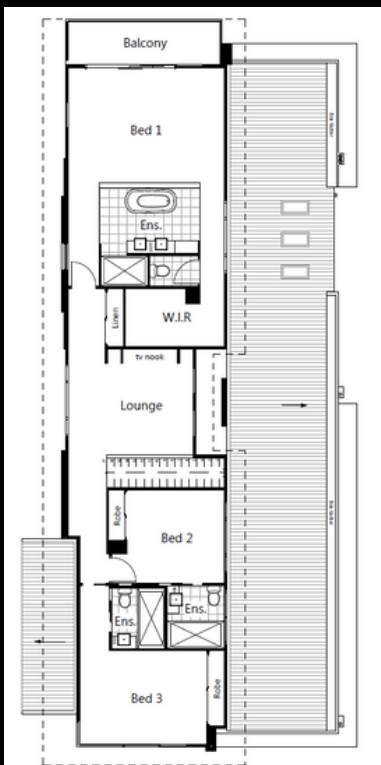


orenschow designer homes



LOWER FLOOR

AZURE



UPPER FLOOR



A sleek, modern design that offers exceptional liveability—ideal for a waterfront block. All living areas and the master suite are oriented to the rear to take full advantage of the outlook, while a central courtyard brings in natural light and creates seamless indoor-outdoor connection.



This Californian Case Study-inspired home is perfectly suited to a sloping or acreage block, featuring expansive rear glazing that floods the interior with natural light and captures stunning views.

BAJA





orenschow designer homes



NOBU

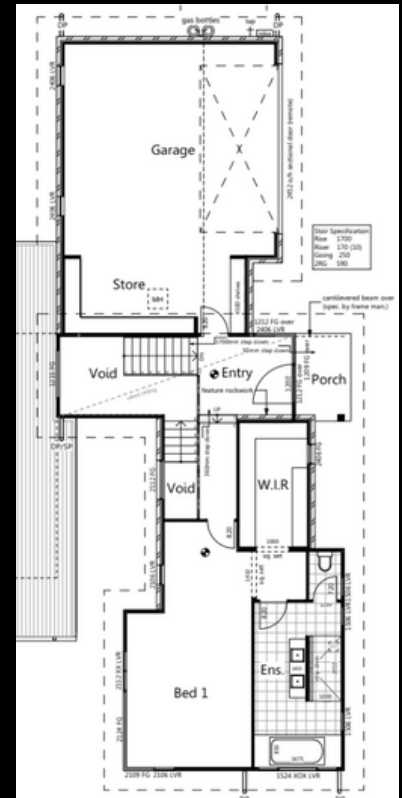


Designed to make the most of a steep or sloping block on the Sunshine Coast, this split-storey home features expansive alfresco and verandah areas—perfect for soaking up the views and enjoying cool, breezy summers.

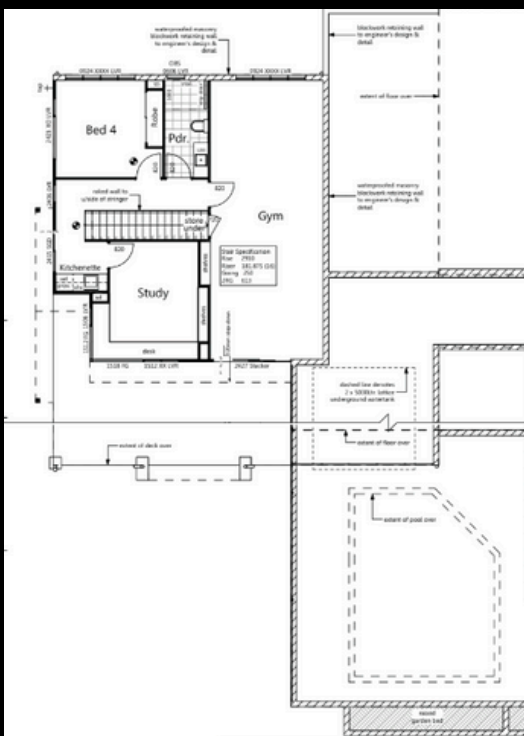
NOBU



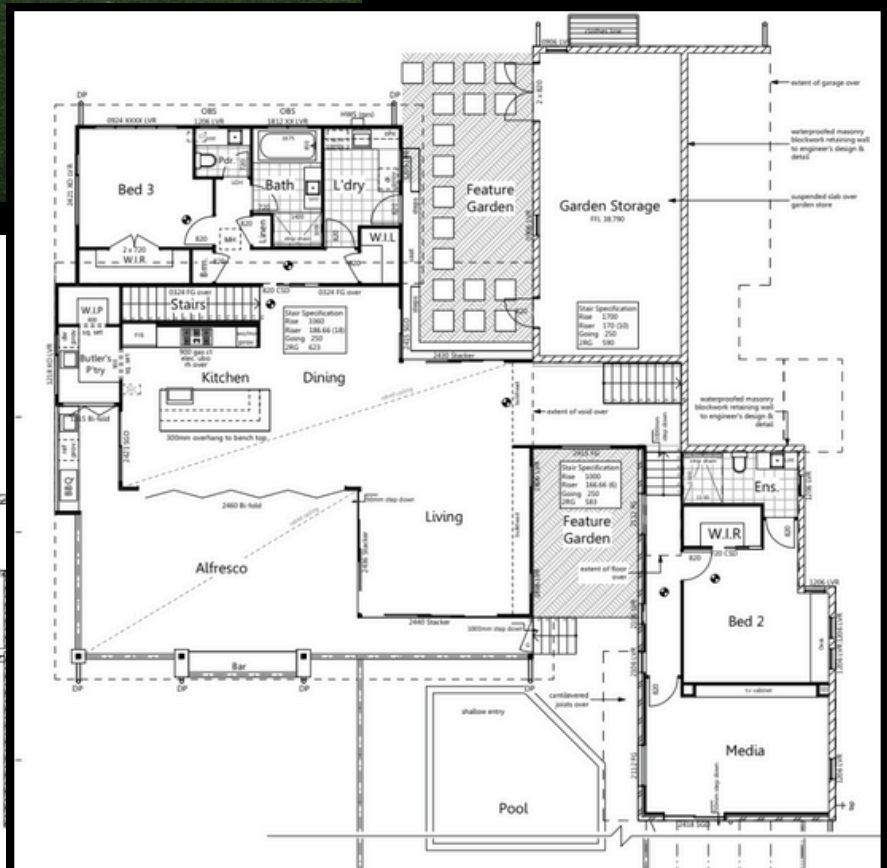
orenschow designer homes



UPPER FLOOR/STREET LEVEL



LOWER FLOOR



MAIN FLOOR



orenschow designer homes



LATITUDE



TA timeless modern design that's even more stunning in person—this split-storey home is perfectly tailored for a steep or sloping block, combining smart design with true luxury living, all wrapped in a beautifully refined package.

LOWER FLOOR



UPPER FLOOR



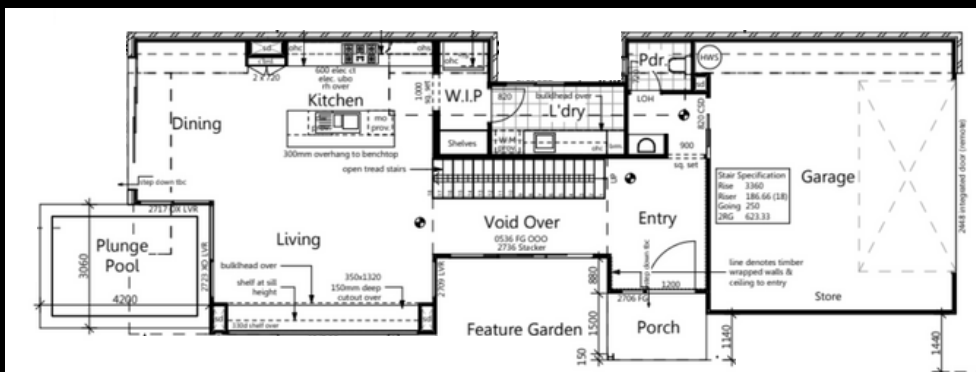
MAIN FLOOR



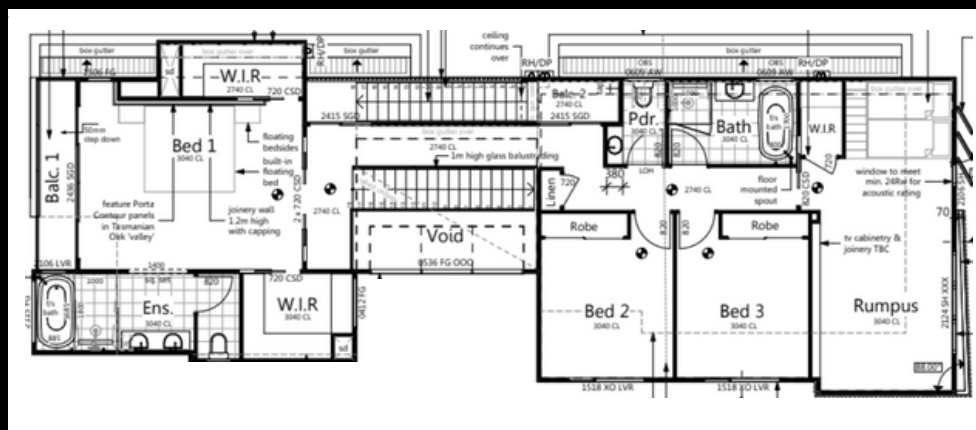
orenschaw designer homes

ALDABRA

Originally crafted for a narrow beachfront block, this modern home makes the most of every square metre, featuring a rooftop deck that captures sweeping ocean views and smart design throughout to maximise space and functionality.



LOWER FLOOR



UPPER FLOOR



orenschow designer homes



CAMELIA



This expansive design draws inspiration from classic Queenslander-style homes, reimagined with a modern layout tailored to the relaxed Sunshine Coast lifestyle. Generous verandahs not only enhance outdoor living but also boost energy efficiency, making it a stylish and sustainable choice.



orenschow designer homes



SAPPHIRE



A true coastal haven, this home boasts generous, light-filled living and sleeping spaces—capturing the essence of Sunshine Coast living. It's coastal lifestyle at its finest, brought to life through a modern, textural design.



orenschow designer homes



HAVARI



A modern, minimalist design perfectly suited to a sloping block, this home features striking timber accents and expansive glazing to flood the space with natural light and frame the surrounding views—effortlessly stylish from every angle.



orenschow designer homes



KAIROA

A clever eco-conscious design that proves energy efficiency and style can go hand in hand. Thoughtfully crafted for year-round comfort, this home is effortlessly liveable and perfectly tailored to the Sunshine Coast climate and lifestyle.





orens Shaw designer homes



LUNE



This entry-level home makes a big impression, featuring four generous bedrooms, a media room, and two distinct facade options to suit your style. Designed to maximise a compact block, it's proof that practical doesn't have to mean plain.



orenschow designer homes



SIERRA

A lowset home which proves that a smaller block, or a more limited budget, does not have to equal a compromise on style. Light-filled, well thought-out spaces means this home packs a serious punch.



orenschaw designer homes

SOMETHING *caught your fancy?*

Think of these designs as just the beginning.

At Orenshaw Designer Homes, every home we build is fully custom—crafted to suit your unique lifestyle, needs, and aesthetic.

These concepts are here to spark ideas and help you communicate your vision. From layout to finishes, everything can be changed, reimagined, and made entirely your own.

Curious about how we turn inspiration into your one-of-a-kind dream home?

Give us a call on 0431 458 307, email kaih@orenschawdesignerhomes.com.au, or visit our website to start the conversation.



BUILT FOR LIVING

www.orenschawdesignerhomes.com.au